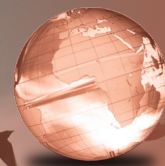


GLOBAL
EDITION



Thomas'
CALCULUS
Early Transcendentals

Thirteenth Edition in SI Units

THOMAS' CALCULUS EARLY TRANSCENDENTALS

Thirteenth Edition in SI Units

Based on the original work by

George B. Thomas, Jr.

Massachusetts Institute of Technology

as revised by

Maurice D. Weir

Naval Postgraduate School

Joel Hass

University of California, Davis

with the assistance of

Christopher Heil

Georgia Institute of Technology

SI conversion by

Antonio Behn

Universidad de Chile

PEARSON

Boston Columbus Indianapolis New York San Francisco Upper Saddle River
Amsterdam Cape Town Dubai London Madrid Milan Munich Paris Montréal Toronto
Delhi Mexico City São Paulo Sydney Hong Kong Seoul Singapore Taipei Tokyo

Editor-in-Chief: Deirdre Lynch
Senior Acquisitions Editor: William Hoffman
Assistant Acquisitions Editor, Global Editions: Aditee Agarwal
Senior Content Editor: Rachel S. Reeve
Senior Managing Editor: Karen Wernholm
Associate Managing Editor: Tamela Ambush
Senior Production Project Manager: Sheila Spinney; Sherry Berg
Senior Manufacturing Controller, Global Editions: Trudy Kimber
Media Production Manager, Global Editions: Vikram Kumar
Associate Design Director, USHE EMSS, TED and HSC: Andrea Nix
Art Director and Cover Design: Beth Paquin
Digital Assets Manager: Marianne Groth
Associate Producer Multimedia: Nicholas Sweeny
Software Development: John Flanagan and Kristina Evans
Executive Marketing Manager: Jeff Weidenaar
Marketing Assistant: Caitlin Crain
Senior Author Support/Technology Specialist: Joe Vetere
Manufacturing Manager: Carol Melville
Text Design: Cenveo® Publisher Services
Illustrations: Karen Hartpence, IlustraTech; Cenveo® Publisher Services

Cover image: Babaroga/Shutterstock

For permission to use copyrighted material, grateful acknowledgment is made to the copyright holders on page C-1, which is hereby made part of this copyright page.

Many of the designations used by manufacturers and sellers to distinguish their products are claimed as trademarks. Where those designations appear in this book, and Pearson Education was aware of a trademark claim, the designations have been printed in initial caps or all caps.

Pearson Education Limited
Edinburgh Gate
Harlow
Essex CM20 2JE
England

and Associated Companies throughout the world

Visit us on the World Wide Web at:
www.pearsonglobaleditions.com

© Pearson Education Limited 2016

The rights of Maurice D. Weir and Joel Hass to be identified as the authors of this work have been asserted by them in accordance with the Copyright, Designs and Patents Act 1988.

Authorized adaptation from the United States edition, entitled Thomas' Calculus, Thirteenth Edition, ISBN 978-0-321-88407-7, by Maurice D. Weir and Joel Hass published by Pearson Education © 2014.

All rights reserved. No part of this publication may be reproduced, stored in a retrieval system, or transmitted in any form or by any means, electronic, mechanical, photocopying, recording or otherwise, without either the prior written permission of the publisher or a license permitting restricted copying in the United Kingdom issued by the Copyright Licensing Agency Ltd, Saffron House, 6–10 Kirby Street, London EC1N 8TS.

All trademarks used herein are the property of their respective owners. The use of any trademark in this text does not vest in the author or publisher any trademark ownership rights in such trademarks, nor does the use of such trademarks imply any affiliation with or endorsement of this book by such owners.

British Library Cataloguing-in-Publication Data

A catalogue record for this book is available from the British Library

10 9 8 7 6 5 4 3 2 1

ISBN 10: 1-292-16344-5
ISBN 13: 978-1-292-16344-4

Typeset by S4Carlisle
Printed and bound in Italy by L.E.G.O.

Contents

Preface 9

1

Functions 15

- 1.1 Functions and Their Graphs 15
- 1.2 Combining Functions; Shifting and Scaling Graphs 28
- 1.3 Trigonometric Functions 35
- 1.4 Graphing with Software 43
- 1.5 Exponential Functions 50
- 1.6 Inverse Functions and Logarithms 55
- Questions to Guide Your Review 68
- Practice Exercises 68
- Additional and Advanced Exercises 71

2

Limits and Continuity 73

- 2.1 Rates of Change and Tangents to Curves 73
- 2.2 Limit of a Function and Limit Laws 80
- 2.3 The Precise Definition of a Limit 91
- 2.4 One-Sided Limits 100
- 2.5 Continuity 107
- 2.6 Limits Involving Infinity; Asymptotes of Graphs 118
- Questions to Guide Your Review 132
- Practice Exercises 132
- Additional and Advanced Exercises 134

3

Derivatives 137

- 3.1 Tangents and the Derivative at a Point 137
- 3.2 The Derivative as a Function 142
- 3.3 Differentiation Rules 150
- 3.4 The Derivative as a Rate of Change 160
- 3.5 Derivatives of Trigonometric Functions 170
- 3.6 The Chain Rule 177
- 3.7 Implicit Differentiation 185
- 3.8 Derivatives of Inverse Functions and Logarithms 191
- 3.9 Inverse Trigonometric Functions 201
- 3.10 Related Rates 207
- 3.11 Linearization and Differentials 216
- Questions to Guide Your Review 228
- Practice Exercises 229
- Additional and Advanced Exercises 233

4	Applications of Derivatives	237
4.1	Extreme Values of Functions	237
4.2	The Mean Value Theorem	245
4.3	Monotonic Functions and the First Derivative Test	253
4.4	Concavity and Curve Sketching	258
4.5	Indeterminate Forms and L'Hôpital's Rule	269
4.6	Applied Optimization	278
4.7	Newton's Method	290
4.8	Antiderivatives	295
	Questions to Guide Your Review	305
	Practice Exercises	305
	Additional and Advanced Exercises	309
5	Integrals	313
5.1	Area and Estimating with Finite Sums	313
5.2	Sigma Notation and Limits of Finite Sums	323
5.3	The Definite Integral	330
5.4	The Fundamental Theorem of Calculus	342
5.5	Indefinite Integrals and the Substitution Method	353
5.6	Definite Integral Substitutions and the Area Between Curves	361
	Questions to Guide Your Review	371
	Practice Exercises	371
	Additional and Advanced Exercises	375
6	Applications of Definite Integrals	379
6.1	Volumes Using Cross-Sections	379
6.2	Volumes Using Cylindrical Shells	390
6.3	Arc Length	398
6.4	Areas of Surfaces of Revolution	404
6.5	Work and Fluid Forces	409
6.6	Moments and Centers of Mass	418
	Questions to Guide Your Review	429
	Practice Exercises	430
	Additional and Advanced Exercises	431
7	Integrals and Transcendental Functions	434
7.1	The Logarithm Defined as an Integral	438
7.2	Exponential Change and Separable Differential Equations	444
7.3	Hyperbolic Functions	453
7.4	Relative Rates of Growth	462
	Questions to Guide Your Review	467
	Practice Exercises	467
	Additional and Advanced Exercises	469

8

Techniques of Integration 470

- 8.1 Using Basic Integration Formulas 470
- 8.2 Integration by Parts 475
- 8.3 Trigonometric Integrals 483
- 8.4 Trigonometric Substitutions 489
- 8.5 Integration of Rational Functions by Partial Fractions 494
- 8.6 Integral Tables and Computer Algebra Systems 503
- 8.7 Numerical Integration 508
- 8.8 Improper Integrals 518
- 8.9 Probability 529
- [Questions to Guide Your Review](#) 542
- [Practice Exercises](#) 543
- [Additional and Advanced Exercises](#) 545

9

First-Order Differential Equations 550

- 9.1 Solutions, Slope Fields, and Euler's Method 550
- 9.2 First-Order Linear Equations 558
- 9.3 Applications 564
- 9.4 Graphical Solutions of Autonomous Equations 570
- 9.5 Systems of Equations and Phase Planes 577
- [Questions to Guide Your Review](#) 583
- [Practice Exercises](#) 583
- [Additional and Advanced Exercises](#) 584

10

Infinite Sequences and Series 586

- 10.1 Sequences 586
- 10.2 Infinite Series 598
- 10.3 The Integral Test 607
- 10.4 Comparison Tests 614
- 10.5 Absolute Convergence; The Ratio and Root Tests 618
- 10.6 Alternating Series and Conditional Convergence 624
- 10.7 Power Series 630
- 10.8 Taylor and Maclaurin Series 640
- 10.9 Convergence of Taylor Series 645
- 10.10 The Binomial Series and Applications of Taylor Series 652
- [Questions to Guide Your Review](#) 661
- [Practice Exercises](#) 662
- [Additional and Advanced Exercises](#) 664

11

Parametric Equations and Polar Coordinates 667

- 11.1 Parametrizations of Plane Curves 667
- 11.2 Calculus with Parametric Curves 675
- 11.3 Polar Coordinates 685

- 11.4 Graphing Polar Coordinate Equations 689
- 11.5 Areas and Lengths in Polar Coordinates 693
- 11.6 Conic Sections 697
- 11.7 Conics in Polar Coordinates 706
 - Questions to Guide Your Review 713
 - Practice Exercises 713
 - Additional and Advanced Exercises 715

12 Vectors and the Geometry of Space 718

- 12.1 Three-Dimensional Coordinate Systems 718
- 12.2 Vectors 723
- 12.3 The Dot Product 732
- 12.4 The Cross Product 740
- 12.5 Lines and Planes in Space 746
- 12.6 Cylinders and Quadric Surfaces 754
 - Questions to Guide Your Review 759
 - Practice Exercises 760
 - Additional and Advanced Exercises 762

13 Vector-Valued Functions and Motion in Space 765

- 13.1 Curves in Space and Their Tangents 765
- 13.2 Integrals of Vector Functions; Projectile Motion 773
- 13.3 Arc Length in Space 782
- 13.4 Curvature and Normal Vectors of a Curve 786
- 13.5 Tangential and Normal Components of Acceleration 792
- 13.6 Velocity and Acceleration in Polar Coordinates 798
 - Questions to Guide Your Review 802
 - Practice Exercises 802
 - Additional and Advanced Exercises 804

14 Partial Derivatives 807

- 14.1 Functions of Several Variables 807
- 14.2 Limits and Continuity in Higher Dimensions 815
- 14.3 Partial Derivatives 824
- 14.4 The Chain Rule 835
- 14.5 Directional Derivatives and Gradient Vectors 844
- 14.6 Tangent Planes and Differentials 853
- 14.7 Extreme Values and Saddle Points 862
- 14.8 Lagrange Multipliers 871
- 14.9 Taylor's Formula for Two Variables 880
- 14.10 Partial Derivatives with Constrained Variables 884
 - Questions to Guide Your Review 889
 - Practice Exercises 890
 - Additional and Advanced Exercises 893

15 Multiple Integrals 896

- 15.1 Double and Iterated Integrals over Rectangles 896
- 15.2 Double Integrals over General Regions 901
- 15.3 Area by Double Integration 910
- 15.4 Double Integrals in Polar Form 914
- 15.5 Triple Integrals in Rectangular Coordinates 920
- 15.6 Moments and Centers of Mass 929
- 15.7 Triple Integrals in Cylindrical and Spherical Coordinates 936
- 15.8 Substitutions in Multiple Integrals 948
- Questions to Guide Your Review 958
- Practice Exercises 958
- Additional and Advanced Exercises 961

16 Integrals and Vector Fields 964

- 16.1 Line Integrals 964
- 16.2 Vector Fields and Line Integrals: Work, Circulation, and Flux 971
- 16.3 Path Independence, Conservative Fields, and Potential Functions 983
- 16.4 Green's Theorem in the Plane 994
- 16.5 Surfaces and Area 1006
- 16.6 Surface Integrals 1017
- 16.7 Stokes' Theorem 1028
- 16.8 The Divergence Theorem and a Unified Theory 1041
- Questions to Guide Your Review 1053
- Practice Exercises 1054
- Additional and Advanced Exercises 1056

17 Second-Order Differential Equations online

- 17.1 Second-Order Linear Equations
- 17.2 Nonhomogeneous Linear Equations
- 17.3 Applications
- 17.4 Euler Equations
- 17.5 Power Series Solutions

Appendices AP-1

- A.1 Real Numbers and the Real Line AP-1
- A.2 Mathematical Induction AP-6
- A.3 Lines, Circles, and Parabolas AP-10
- A.4 Proofs of Limit Theorems AP-19
- A.5 Commonly Occurring Limits AP-22
- A.6 Theory of the Real Numbers AP-23
- A.7 Complex Numbers AP-26
- A.8 The Distributive Law for Vector Cross Products AP-35
- A.9 The Mixed Derivative Theorem and the Increment Theorem AP-36

Answers to Odd-Numbered Exercises A-1

Index I-1

Credits C-1

A Brief Table of Integrals T-1

Basic Formulas and Rules F-1



Preface

Thomas' Calculus: Early Transcendentals, Thirteenth Edition, provides a modern introduction to calculus that focuses on conceptual understanding in developing the essential elements of a traditional course. This material supports a three-semester or four-quarter calculus sequence typically taken by students in mathematics, engineering, and the natural sciences. Precise explanations, thoughtfully chosen examples, superior figures, and time-tested exercise sets are the foundation of this text. We continue to improve this text in keeping with shifts in both the preparation and the ambitions of today's students, and the applications of calculus to a changing world.

Many of today's students have been exposed to the terminology and computational methods of calculus in high school. Despite this familiarity, their acquired algebra and trigonometry skills sometimes limit their ability to master calculus at the college level. In this text, we seek to balance students' prior experience in calculus with the algebraic skill development they may still need, without slowing their progress through calculus itself. We have taken care to provide enough review material (in the text and appendices), detailed solutions, and variety of examples and exercises, to support a complete understanding of calculus for students at varying levels. We present the material in a way to encourage student thinking, going beyond memorizing formulas and routine procedures, and we show students how to generalize key concepts once they are introduced. References are made throughout which tie a new concept to a related one that was studied earlier, or to a generalization they will see later on. After studying calculus from *Thomas*, students will have developed problem solving and reasoning abilities that will serve them well in many important aspects of their lives. Mastering this beautiful and creative subject, with its many practical applications across so many fields of endeavor, is its own reward. But the real gift of studying calculus is acquiring the ability to think logically and factually, and learning how to generalize conceptually. We intend this book to encourage and support those goals.

New to this Edition

In this new edition we further blend conceptual thinking with the overall logic and structure of single and multivariable calculus. We continue to improve clarity and precision, taking into account helpful suggestions from readers and users of our previous texts. While keeping a careful eye on length, we have created additional examples throughout the text. Numerous new exercises have been added at all levels of difficulty, but the focus in this revision has been on the mid-level exercises. A number of figures have been reworked and new ones added to improve visualization. We have written a new section on probability, which provides an important application of integration to the life sciences.

We have maintained the basic structure of the Table of Contents, and retained improvements from the twelfth edition. In keeping with this process, we have added more improvements throughout, which we detail here:

- **Functions** In discussing the use of software for graphing purposes, we added a brief subsection on least squares curve fitting, which allows students to take advantage of this widely used and available application. Prerequisite material continues to be reviewed in Appendices 1–3.
- **Continuity** We clarified the continuity definitions by confining the term “endpoints” to intervals instead of more general domains, and we moved the subsection on continuous extension of a function to the end of the continuity section.
- **Derivatives** We included a brief geometric insight justifying l’Hôpital’s Rule. We also enhanced and clarified the meaning of differentiability for functions of several variables, and added a result on the Chain Rule for functions defined along a path.
- **Integrals** We wrote a new section reviewing basic integration formulas and the Substitution Rule, using them in combination with algebraic and trigonometric identities, before presenting other techniques of integration.
- **Probability** We created a new section applying improper integrals to some commonly used probability distributions, including the exponential and normal distributions. Many examples and exercises apply to the life sciences.
- **Series** We now present the idea of absolute convergence before giving the Ratio and Root Tests, and then state these tests in their stronger form. Conditional convergence is introduced later on with the Alternating Series Test.
- **Multivariable and Vector Calculus** We give more geometric insight into the idea of multiple integrals, and we enhance the meaning of the Jacobian in using substitutions to evaluate them. The idea of surface integrals of vector fields now parallels the notion for line integrals of vector fields. We have improved our discussion of the divergence and curl of a vector field.
- **Exercises and Examples** Strong exercise sets are traditional with *Thomas’ Calculus*, and we continue to strengthen them with each new edition. Here, we have updated, changed, and added many new exercises and examples, with particular attention to including more applications to the life science areas and to contemporary problems. For instance, we added new exercises addressing drug concentrations and dosages, estimating the spill rate of a ruptured oil pipeline, and predicting rising costs for college tuition.
- **The Use of SI Units** We have used SI units throughout this edition, except where a non-SI unit is commonly used in scientific, technical, and commercial literature in most regions.

Continuing Features

RIGOR The level of rigor is consistent with that of earlier editions. We continue to distinguish between formal and informal discussions and to point out their differences. We think starting with a more intuitive, less formal, approach helps students understand a new or difficult concept so they can then appreciate its full mathematical precision and outcomes. We pay attention to defining ideas carefully and to proving theorems appropriate for calculus students, while mentioning deeper or subtler issues they would study in a more advanced course. Our organization and distinctions between informal and formal discussions give the instructor a degree of flexibility in the amount and depth of coverage of the various topics. For example, while we do not prove the Intermediate Value Theorem or the Extreme

Value Theorem for continuous functions on $a \leq x \leq b$, we do state these theorems precisely, illustrate their meanings in numerous examples, and use them to prove other important results. Furthermore, for those instructors who desire greater depth of coverage, in Appendix 6 we discuss the reliance of the validity of these theorems on the completeness of the real numbers.

WRITING EXERCISES Writing exercises placed throughout the text ask students to explore and explain a variety of calculus concepts and applications. In addition, the end of each chapter contains a list of questions for students to review and summarize what they have learned. Many of these exercises make good writing assignments.

END-OF-CHAPTER REVIEWS AND PROJECTS In addition to problems appearing after each section, each chapter culminates with review questions, practice exercises covering the entire chapter, and a series of Additional and Advanced Exercises serving to include more challenging or synthesizing problems. Most chapters also include descriptions of several **Technology Application Projects** that can be worked by individual students or groups of students over a longer period of time. These projects require the use of a computer running *Mathematica* or *Maple* and additional material that is available over the Internet at www.pearsonglobaleditions/thomas and in MyMathLab.

WRITING AND APPLICATIONS As always, this text continues to be easy to read, conversational, and mathematically rich. Each new topic is motivated by clear, easy-to-understand examples and is then reinforced by its application to real-world problems of immediate interest to students. A hallmark of this book has been the application of calculus to science and engineering. These applied problems have been updated, improved, and extended continually over the last several editions.

TECHNOLOGY In a course using the text, technology can be incorporated according to the taste of the instructor. Each section contains exercises requiring the use of technology; these are marked with a **T** if suitable for calculator or computer use, or they are labeled **Computer Explorations** if a computer algebra system (CAS, such as *Maple* or *Mathematica*) is required.

Additional Resources

INSTRUCTOR'S SOLUTIONS MANUAL

Single Variable Calculus (Chapters 1–11), ISBN 1-292-16345-3 | 978-1-292-16345-1
Multivariable Calculus (Chapters 10–16), ISBN 1-292-08988-1 | 978-1-292-08988-1
The *Instructor's Solutions Manual* contains complete worked-out solutions to all of the exercises in *Thomas' Calculus: Early Transcendentals*.

JUST-IN-TIME ALGEBRA AND TRIGONOMETRY FOR EARLY TRANSCENDENTALS CALCULUS, Fourth Edition

ISBN 0-321-67103-1 | 978-0-321-67103-5

Sharp algebra and trigonometry skills are critical to mastering calculus, and *Just-in-Time Algebra and Trigonometry for Early Transcendentals Calculus* by Guntram Mueller and Ronald I. Brent is designed to bolster these skills while students study calculus. As students make their way through calculus, this text is with them every step of the way, showing them the necessary algebra or trigonometry topics and pointing out potential problem spots. The easy-to-use table of contents has algebra and trigonometry topics arranged in the order in which students will need them as they study calculus.

Technology Resource Manuals

Maple Manual by Marie Vanisko, Carroll College

Mathematica Manual by Marie Vanisko, Carroll College

TI-Graphing Calculator Manual by Elaine McDonald-Newman, Sonoma State University

These manuals cover *Maple* 17, *Mathematica* 8, and the TI-83 Plus/TI-84 Plus and TI-89, respectively. Each manual provides detailed guidance for integrating a specific software package or graphing calculator throughout the course, including syntax and commands. These manuals are available to qualified instructors through the *Thomas' Calculus: Early Transcendentals* Web site, www.pearsonglobaleditions/thomas, and MyMathLab.

WEB SITE www.pearsonglobaleditions/thomas

The *Thomas' Calculus: Early Transcendentals* Web site contains the chapter on Second-Order Differential Equations, including odd-numbered answers, and provides the expanded historical biographies and essays referenced in the text. The Technology Resource Manuals and the **Technology Application Projects**, which can be used as projects by individual students or groups of students, are also available.

MyMathLab® Online Course (access code required)

MyMathLab from Pearson is the world's leading online resource in mathematics, integrating interactive homework, assessment, and media in a flexible, easy-to-use format.

MyMathLab delivers **proven results** in helping individual students succeed.

- MyMathLab has a consistently positive impact on the quality of learning in higher education math instruction. MyMathLab can be successfully implemented in any environment—lab-based, hybrid, fully online, traditional—and demonstrates the quantifiable difference that integrated usage makes in regard to student retention, subsequent success, and overall achievement.
- MyMathLab's comprehensive online gradebook automatically tracks your students' results on tests, quizzes, homework, and in the study plan. You can use the gradebook to quickly intervene if your students have trouble, or to provide positive feedback on a job well done. The data within MyMathLab are easily exported to a variety of spreadsheet programs, such as Microsoft Excel. You can determine which points of data you want to export, and then analyze the results to determine success.

MyMathLab provides **engaging experiences** that personalize, stimulate, and measure learning for each student.

- **“Getting Ready” chapter** includes hundreds of exercises that address prerequisite skills in algebra and trigonometry. Each student can receive remediation for just those skills he or she needs help with.
- **Exercises:** The homework and practice exercises in MyMathLab are correlated to the exercises in the textbook, and they regenerate algorithmically to give students unlimited opportunity for practice and mastery. The software offers immediate, helpful feedback when students enter incorrect answers.
- **Multimedia Learning Aids:** Exercises include guided solutions, sample problems, animations, Java™ applets, and eText access for extra help at point-of-use.

And, MyMathLab comes from an **experienced partner** with educational expertise and an eye on the future.

- Knowing that you are using a Pearson product means knowing that you are using quality content. It means that our eTexts are accurate and our assessment tools work. It also means we are committed to making MyMathLab as accessible as possible.
- Whether you are just getting started with MyMathLab, or have a question along the way, we're here to help you learn about our technologies and how to incorporate them into your course.

To learn more about how MyMathLab combines proven learning applications with powerful assessment, visit www.mymathlab.com or contact your Pearson representative.

TestGen®

TestGen® (www.pearsoned.com/testgen) enables instructors to build, edit, print, and administer tests using a computerized bank of questions developed to cover all the objectives of the text. TestGen is algorithmically based, allowing instructors to create multiple but equivalent versions of the same question or test with the click of a button. Instructors can also modify test bank questions or add new questions. The software and test bank are available for download from Pearson Education's online catalog.

PowerPoint® Lecture Slides

These classroom presentation slides are geared specifically to the sequence and philosophy of the *Thomas' Calculus* series. Key graphics from the book are included to help bring the concepts alive in the classroom. These files are available to qualified instructors through the Pearson Instructor Resource Center, www.pearsonglobaleditions.com/thomas, and MyMathLab.

Acknowledgments

We would like to express our thanks to the people who made many valuable contributions to this edition as it developed through its various stages:

Accuracy Checkers

Lisa Collette
Patricia Nelson
Tom Wegleitner

Reviewers for Recent Editions

Meighan Dillon, *Southern Polytechnic State University*
Anne Dougherty, *University of Colorado*
Said Fariabi, *San Antonio College*
Klaus Fischer, *George Mason University*
Tim Flood, *Pittsburg State University*
Rick Ford, *California State University—Chico*
Robert Gardner, *East Tennessee State University*
Christopher Heil, *Georgia Institute of Technology*
Joshua Brandon Holden, *Rose-Hulman Institute of Technology*
Alexander Hulpke, *Colorado State University*
Jacqueline Jensen, *Sam Houston State University*
Jennifer M. Johnson, *Princeton University*
Hideaki Kaneko, *Old Dominion University*
Przemo Kranz, *University of Mississippi*
Xin Li, *University of Central Florida*
Maura Mast, *University of Massachusetts—Boston*
Val Mohanakumar, *Hillsborough Community College—Dale Mabry Campus*
Aaron Montgomery, *Central Washington University*
Christopher M. Pavone, *California State University at Chico*
Cynthia Piez, *University of Idaho*
Brooke Quinlan, *Hillsborough Community College—Dale Mabry Campus*
Rebecca A. Segal, *Virginia Commonwealth University*
Andrew V. Sills, *Georgia Southern University*
Alex Smith, *University of Wisconsin—Eau Claire*
Mark A. Smith, *Miami University*
Donald Solomon, *University of Wisconsin—Milwaukee*
John Sullivan, *Black Hawk College*

Maria Terrell, *Cornell University*
Blake Thornton, *Washington University in St. Louis*
David Walnut, *George Mason University*
Adrian Wilson, *University of Montevallo*
Bobby Winters, *Pittsburg State University*
Dennis Wortman, *University of Massachusetts—Boston*

Global Edition Contributors and Reviewers

Pearson would like to thank the following for their contributions to the Global Edition:

Contributor

Antonio Behn, *Universidad de Chile*

Additional Contributions

Nalinakshi N., *Atria Institute of Technology*

Reviewers

B. R. Shankar, *National Institute of Technology Karnataka, India*

Fedor Duzhin, *Nanyang Technological University, Singapore*

José Luis Zuleta Estrugo, *École Polytechnique Fédérale de Lausanne, Switzerland*



1

Functions

OVERVIEW Functions are fundamental to the study of calculus. In this chapter we review what functions are and how they are pictured as graphs, how they are combined and transformed, and ways they can be classified. We review the trigonometric functions, and we discuss misrepresentations that can occur when using calculators and computers to obtain a function's graph. We also discuss inverse, exponential, and logarithmic functions. The real number system, Cartesian coordinates, straight lines, circles, parabolas, and ellipses are reviewed in the Appendices.

1.1 Functions and Their Graphs

Functions are a tool for describing the real world in mathematical terms. A function can be represented by an equation, a graph, a numerical table, or a verbal description; we will use all four representations throughout this book. This section reviews these function ideas.

Functions; Domain and Range

The temperature at which water boils depends on the elevation above sea level (the boiling point drops as you ascend). The interest paid on a cash investment depends on the length of time the investment is held. The area of a circle depends on the radius of the circle. The distance an object travels at constant speed along a straight-line path depends on the elapsed time.

In each case, the value of one variable quantity, say y , depends on the value of another variable quantity, which we might call x . We say that “ y is a function of x ” and write this symbolically as

$$y = f(x) \quad (\text{“}y \text{ equals } f \text{ of } x\text{”}).$$

In this notation, the symbol f represents the function, the letter x is the **independent variable** representing the input value of f , and y is the **dependent variable** or output value of f at x .

DEFINITION A **function** f from a set D to a set Y is a rule that assigns a *unique* (single) element $f(x) \in Y$ to each element $x \in D$.

The set D of all possible input values is called the **domain** of the function. The set of all output values of $f(x)$ as x varies throughout D is called the **range** of the function. The range may not include every element in the set Y . The domain and range of a function can be any sets of objects, but often in calculus they are sets of real numbers interpreted as points of a coordinate line. (In Chapters 13–16, we will encounter functions for which the elements of the sets are points in the coordinate plane or in space.)

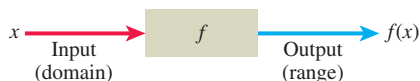


FIGURE 1.1 A diagram showing a function as a kind of machine.

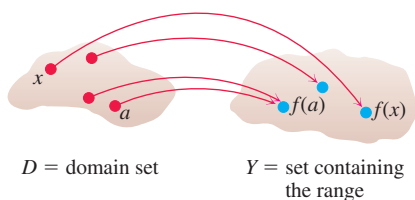


FIGURE 1.2 A function from a set D to a set Y assigns a unique element of Y to each element in D .

Often a function is given by a formula that describes how to calculate the output value from the input variable. For instance, the equation $A = \pi r^2$ is a rule that calculates the area A of a circle from its radius r (so r , interpreted as a length, can only be positive in this formula). When we define a function $y = f(x)$ with a formula and the domain is not stated explicitly or restricted by context, the domain is assumed to be the largest set of real x -values for which the formula gives real y -values, which is called the **natural domain**. If we want to restrict the domain in some way, we must say so. The domain of $y = x^2$ is the entire set of real numbers. To restrict the domain of the function to, say, positive values of x , we would write “ $y = x^2, x > 0$.”

Changing the domain to which we apply a formula usually changes the range as well. The range of $y = x^2$ is $[0, \infty)$. The range of $y = x^2, x \geq 2$, is the set of all numbers obtained by squaring numbers greater than or equal to 2. In set notation (see Appendix 1), the range is $\{x^2 \mid x \geq 2\}$ or $\{y \mid y \geq 4\}$ or $[4, \infty)$.

When the range of a function is a set of real numbers, the function is said to be **real-valued**. The domains and ranges of most real-valued functions of a real variable we consider are intervals or combinations of intervals. The intervals may be open, closed, or half open, and may be finite or infinite. Sometimes the range of a function is not easy to find.

A function f is like a machine that produces an output value $f(x)$ in its range whenever we feed it an input value x from its domain (Figure 1.1). The function keys on a calculator give an example of a function as a machine. For instance, the \sqrt{x} key on a calculator gives an output value (the square root) whenever you enter a nonnegative number x and press the \sqrt{x} key.

A function can also be pictured as an **arrow diagram** (Figure 1.2). Each arrow associates an element of the domain D with a unique or single element in the set Y . In Figure 1.2, the arrows indicate that $f(a)$ is associated with a , $f(x)$ is associated with x , and so on. Notice that a function can have the same *value* at two different input elements in the domain (as occurs with $f(a)$ in Figure 1.2), but each input element x is assigned a *single* output value $f(x)$.

EXAMPLE 1 Let’s verify the natural domains and associated ranges of some simple functions. The domains in each case are the values of x for which the formula makes sense.

Function	Domain (x)	Range (y)
$y = x^2$	$(-\infty, \infty)$	$[0, \infty)$
$y = 1/x$	$(-\infty, 0) \cup (0, \infty)$	$(-\infty, 0) \cup (0, \infty)$
$y = \sqrt{x}$	$[0, \infty)$	$[0, \infty)$
$y = \sqrt{4 - x}$	$(-\infty, 4]$	$[0, \infty)$
$y = \sqrt{1 - x^2}$	$[-1, 1]$	$[0, 1]$

Solution The formula $y = x^2$ gives a real y -value for any real number x , so the domain is $(-\infty, \infty)$. The range of $y = x^2$ is $[0, \infty)$ because the square of any real number is nonnegative and every nonnegative number y is the square of its own square root, $y = (\sqrt{y})^2$ for $y \geq 0$.

The formula $y = 1/x$ gives a real y -value for every x except $x = 0$. For consistency in the rules of arithmetic, *we cannot divide any number by zero*. The range of $y = 1/x$, the set of reciprocals of all nonzero real numbers, is the set of all nonzero real numbers, since $y = 1/(1/y)$. That is, for $y \neq 0$ the number $x = 1/y$ is the input assigned to the output value y .

The formula $y = \sqrt{x}$ gives a real y -value only if $x \geq 0$. The range of $y = \sqrt{x}$ is $[0, \infty)$ because every nonnegative number is some number’s square root (namely, it is the square root of its own square).

In $y = \sqrt{4 - x}$, the quantity $4 - x$ cannot be negative. That is, $4 - x \geq 0$, or $x \leq 4$. The formula gives real y -values for all $x \leq 4$. The range of $\sqrt{4 - x}$ is $[0, \infty)$, the set of all nonnegative numbers.

The formula $y = \sqrt{1 - x^2}$ gives a real y -value for every x in the closed interval from -1 to 1 . Outside this domain, $1 - x^2$ is negative and its square root is not a real number. The values of $1 - x^2$ vary from 0 to 1 on the given domain, and the square roots of these values do the same. The range of $\sqrt{1 - x^2}$ is $[0, 1]$. ■

Graphs of Functions

If f is a function with domain D , its **graph** consists of the points in the Cartesian plane whose coordinates are the input-output pairs for f . In set notation, the graph is

$$\{(x, f(x)) \mid x \in D\}.$$

The graph of the function $f(x) = x + 2$ is the set of points with coordinates (x, y) for which $y = x + 2$. Its graph is the straight line sketched in Figure 1.3.

The graph of a function f is a useful picture of its behavior. If (x, y) is a point on the graph, then $y = f(x)$ is the height of the graph above (or below) the point x . The height may be positive or negative, depending on the sign of $f(x)$ (Figure 1.4).

x	$y = x^2$
-2	4
-1	1
0	0
1	1
$\frac{3}{2}$	$\frac{9}{4}$
2	4

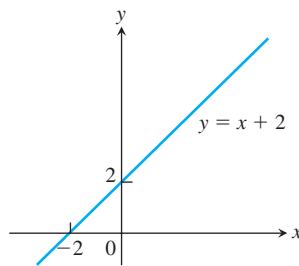


FIGURE 1.3 The graph of $f(x) = x + 2$ is the set of points (x, y) for which y has the value $x + 2$.

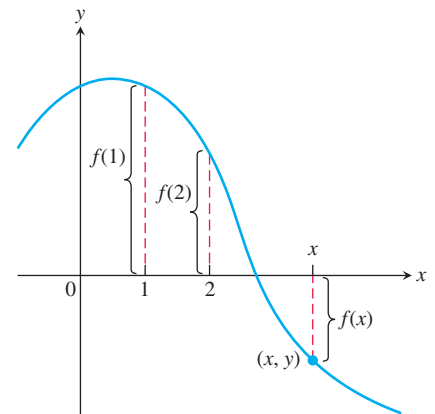


FIGURE 1.4 If (x, y) lies on the graph of f , then the value $y = f(x)$ is the height of the graph above the point x (or below x if $f(x)$ is negative).

EXAMPLE 2 Graph the function $y = x^2$ over the interval $[-2, 2]$.

Solution Make a table of xy -pairs that satisfy the equation $y = x^2$. Plot the points (x, y) whose coordinates appear in the table, and draw a *smooth* curve (labeled with its equation) through the plotted points (see Figure 1.5). ■

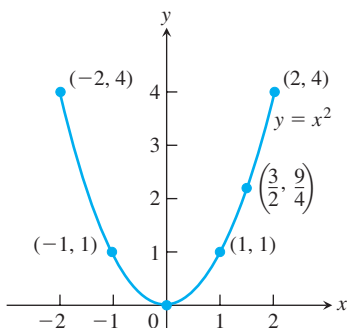
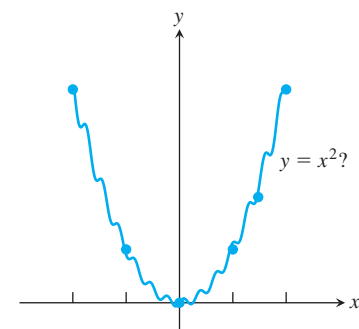
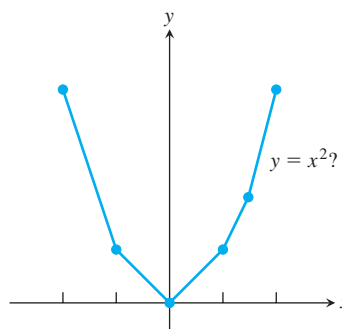


FIGURE 1.5 Graph of the function in Example 2.

How do we know that the graph of $y = x^2$ doesn't look like one of these curves?



To find out, we could plot more points. But how would we then connect *them*? The basic question still remains: How do we know for sure what the graph looks like between the points we plot? Calculus answers this question, as we will see in Chapter 4. Meanwhile, we will have to settle for plotting points and connecting them as best we can.

Representing a Function Numerically

We have seen how a function may be represented algebraically by a formula (the area function) and visually by a graph (Example 2). Another way to represent a function is **numerically**, through a table of values. Numerical representations are often used by engineers and experimental scientists. From an appropriate table of values, a graph of the function can be obtained using the method illustrated in Example 2, possibly with the aid of a computer. The graph consisting of only the points in the table is called a **scatterplot**.

EXAMPLE 3 Musical notes are pressure waves in the air. The data associated with Figure 1.6 give recorded pressure displacement versus time in seconds of a musical note produced by a tuning fork. The table provides a representation of the pressure function over time. If we first make a scatterplot and then connect approximately the data points (t, p) from the table, we obtain the graph shown in the figure.

Time	Pressure	Time	Pressure
0.00091	-0.080	0.00362	0.217
0.00108	0.200	0.00379	0.480
0.00125	0.480	0.00398	0.681
0.00144	0.693	0.00416	0.810
0.00162	0.816	0.00435	0.827
0.00180	0.844	0.00453	0.749
0.00198	0.771	0.00471	0.581
0.00216	0.603	0.00489	0.346
0.00234	0.368	0.00507	0.077
0.00253	0.099	0.00525	-0.164
0.00271	-0.141	0.00543	-0.320
0.00289	-0.309	0.00562	-0.354
0.00307	-0.348	0.00579	-0.248
0.00325	-0.248	0.00598	-0.035
0.00344	-0.041		

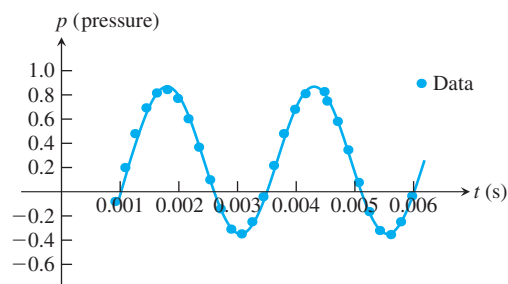


FIGURE 1.6 A smooth curve through the plotted points gives a graph of the pressure function represented by the accompanying tabled data (Example 3).

The Vertical Line Test for a Function

Not every curve in the coordinate plane can be the graph of a function. A function f can have only one value $f(x)$ for each x in its domain, so *no vertical* line can intersect the graph of a function more than once. If a is in the domain of the function f , then the vertical line $x = a$ will intersect the graph of f at the single point $(a, f(a))$.

A circle cannot be the graph of a function, since some vertical lines intersect the circle twice. The circle graphed in Figure 1.7a, however, does contain the graphs of functions of x , such as the upper semicircle defined by the function $f(x) = \sqrt{1 - x^2}$ and the lower semicircle defined by the function $g(x) = -\sqrt{1 - x^2}$ (Figures 1.7b and 1.7c).

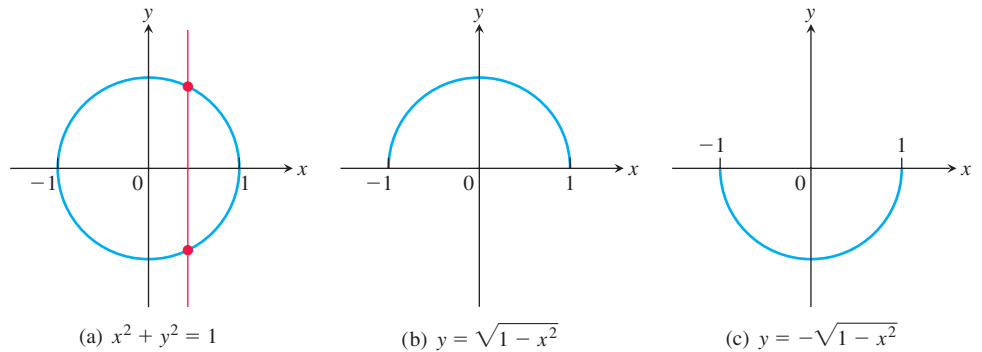


FIGURE 1.7 (a) The circle is not the graph of a function; it fails the vertical line test. (b) The upper semicircle is the graph of a function $f(x) = \sqrt{1 - x^2}$. (c) The lower semicircle is the graph of a function $g(x) = -\sqrt{1 - x^2}$.

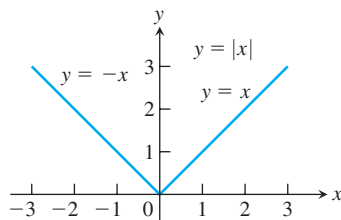


FIGURE 1.8 The absolute value function has domain $(-\infty, \infty)$ and range $[0, \infty)$.

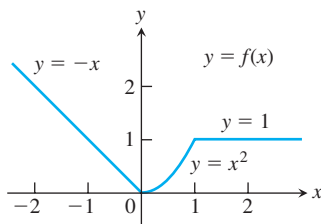


FIGURE 1.9 To graph the function $y = f(x)$ shown here, we apply different formulas to different parts of its domain (Example 4).

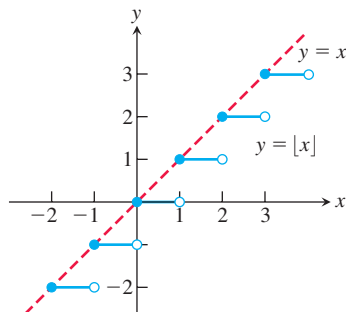


FIGURE 1.10 The graph of the greatest integer function $y = \lfloor x \rfloor$ lies on or below the line $y = x$, so it provides an integer floor for x (Example 5).

Piecewise-Defined Functions

Sometimes a function is described in pieces by using different formulas on different parts of its domain. One example is the **absolute value function**

$$|x| = \begin{cases} x, & x \geq 0 & \text{First formula} \\ -x, & x < 0, & \text{Second formula} \end{cases}$$

whose graph is given in Figure 1.8. The right-hand side of the equation means that the function equals x if $x \geq 0$, and equals $-x$ if $x < 0$. Piecewise-defined functions often arise when real-world data are modeled. Here are some other examples.

EXAMPLE 4 The function

$$f(x) = \begin{cases} -x, & x < 0 & \text{First formula} \\ x^2, & 0 \leq x \leq 1 & \text{Second formula} \\ 1, & x > 1 & \text{Third formula} \end{cases}$$

is defined on the entire real line but has values given by different formulas, depending on the position of x . The values of f are given by $y = -x$ when $x < 0$, $y = x^2$ when $0 \leq x \leq 1$, and $y = 1$ when $x > 1$. The function, however, is *just one function* whose domain is the entire set of real numbers (Figure 1.9). ■

EXAMPLE 5 The function whose value at any number x is the *greatest integer less than or equal to* x is called the **greatest integer function** or the **integer floor function**. It is denoted $\lfloor x \rfloor$. Figure 1.10 shows the graph. Observe that

$$\begin{aligned} \lfloor 2.4 \rfloor &= 2, & \lfloor 1.9 \rfloor &= 1, & \lfloor 0 \rfloor &= 0, & \lfloor -1.2 \rfloor &= -2, \\ \lfloor 2 \rfloor &= 2, & \lfloor 0.2 \rfloor &= 0, & \lfloor -0.3 \rfloor &= -1, & \lfloor -2 \rfloor &= -2. \end{aligned}$$

EXAMPLE 6 The function whose value at any number x is the *smallest integer greater than or equal to* x is called the **least integer function** or the **integer ceiling function**. It is denoted $\lceil x \rceil$. Figure 1.11 shows the graph. For positive values of x , this function might represent, for example, the cost of parking x hours in a parking lot that charges \$1 for each hour or part of an hour. ■

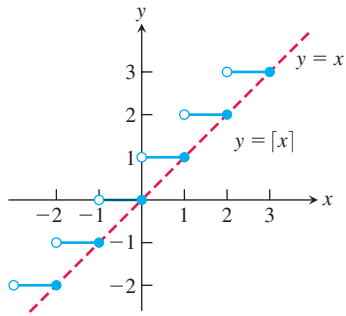


FIGURE 1.11 The graph of the least integer function $y = [x]$ lies on or above the line $y = x$, so it provides an integer ceiling for x (Example 6).

Increasing and Decreasing Functions

If the graph of a function *climbs* or *rises* as you move from left to right, we say that the function is *increasing*. If the graph *descends* or *falls* as you move from left to right, the function is *decreasing*.

DEFINITIONS Let f be a function defined on an interval I and let x_1 and x_2 be any two points in I .

1. If $f(x_2) > f(x_1)$ whenever $x_1 < x_2$, then f is said to be **increasing** on I .
2. If $f(x_2) < f(x_1)$ whenever $x_1 < x_2$, then f is said to be **decreasing** on I .

It is important to realize that the definitions of increasing and decreasing functions must be satisfied for *every* pair of points x_1 and x_2 in I with $x_1 < x_2$. Because we use the inequality $<$ to compare the function values, instead of \leq , it is sometimes said that f is *strictly* increasing or decreasing on I . The interval I may be finite (also called bounded) or infinite (unbounded) and by definition never consists of a single point (Appendix 1).

EXAMPLE 7 The function graphed in Figure 1.9 is decreasing on $(-\infty, 0]$ and increasing on $[0, 1]$. The function is neither increasing nor decreasing on the interval $[1, \infty)$ because of the strict inequalities used to compare the function values in the definitions. ■

Even Functions and Odd Functions: Symmetry

The graphs of *even* and *odd* functions have characteristic symmetry properties.

DEFINITIONS A function $y = f(x)$ is an

even function of x if $f(-x) = f(x)$,

odd function of x if $f(-x) = -f(x)$,

for every x in the function's domain.

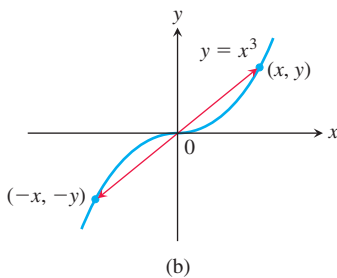
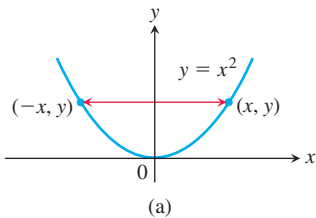


FIGURE 1.12 (a) The graph of $y = x^2$ (an even function) is symmetric about the y -axis. (b) The graph of $y = x^3$ (an odd function) is symmetric about the origin.

The names *even* and *odd* come from powers of x . If y is an even power of x , as in $y = x^2$ or $y = x^4$, it is an even function of x because $(-x)^2 = x^2$ and $(-x)^4 = x^4$. If y is an odd power of x , as in $y = x$ or $y = x^3$, it is an odd function of x because $(-x)^1 = -x$ and $(-x)^3 = -x^3$.

The graph of an even function is **symmetric about the y -axis**. Since $f(-x) = f(x)$, a point (x, y) lies on the graph if and only if the point $(-x, y)$ lies on the graph (Figure 1.12a). A reflection across the y -axis leaves the graph unchanged.

The graph of an odd function is **symmetric about the origin**. Since $f(-x) = -f(x)$, a point (x, y) lies on the graph if and only if the point $(-x, -y)$ lies on the graph (Figure 1.12b). Equivalently, a graph is symmetric about the origin if a rotation of 180° about the origin leaves the graph unchanged. Notice that the definitions imply that both x and $-x$ must be in the domain of f .

EXAMPLE 8 Here are several functions illustrating the definition.

$f(x) = x^2$ Even function: $(-x)^2 = x^2$ for all x ; symmetry about y -axis.

$f(x) = x^2 + 1$ Even function: $(-x)^2 + 1 = x^2 + 1$ for all x ; symmetry about y -axis (Figure 1.13a).

$f(x) = x$ Odd function: $(-x) = -x$ for all x ; symmetry about the origin.

$f(x) = x + 1$ Not odd: $f(-x) = -x + 1$, but $-f(x) = -x - 1$. The two are not equal.

Not even: $(-x) + 1 \neq x + 1$ for all $x \neq 0$ (Figure 1.13b). ■

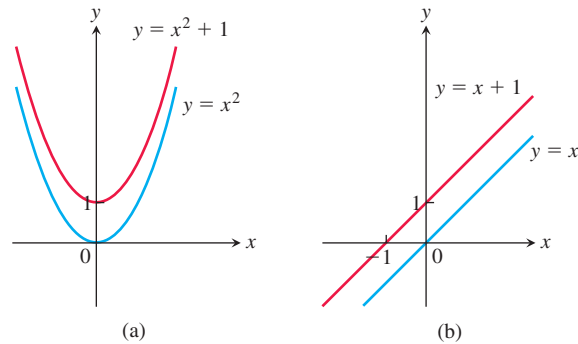


FIGURE 1.13 (a) When we add the constant term 1 to the function $y = x^2$, the resulting function $y = x^2 + 1$ is still even and its graph is still symmetric about the y -axis. (b) When we add the constant term 1 to the function $y = x$, the resulting function $y = x + 1$ is no longer odd, since the symmetry about the origin is lost. The function $y = x + 1$ is also not even (Example 8).

Common Functions

A variety of important types of functions are frequently encountered in calculus. We identify and briefly describe them here.

Linear Functions A function of the form $f(x) = mx + b$, for constants m and b , is called a **linear function**. Figure 1.14a shows an array of lines $f(x) = mx$ where $b = 0$, so these lines pass through the origin. The function $f(x) = x$ where $m = 1$ and $b = 0$ is called the **identity function**. Constant functions result when the slope $m = 0$ (Figure 1.14b). A linear function with positive slope whose graph passes through the origin is called a *proportionality* relationship.

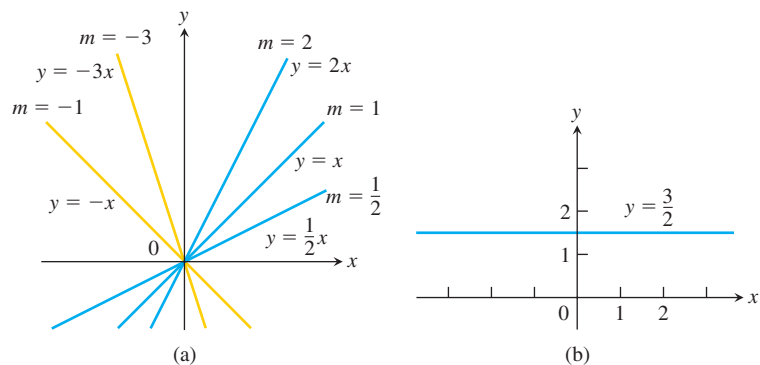


FIGURE 1.14 (a) Lines through the origin with slope m . (b) A constant function with slope $m = 0$.

DEFINITION Two variables y and x are **proportional** (to one another) if one is always a constant multiple of the other; that is, if $y = kx$ for some nonzero constant k .

If the variable y is proportional to the reciprocal $1/x$, then sometimes it is said that y is **inversely proportional** to x (because $1/x$ is the multiplicative inverse of x).

Power Functions A function $f(x) = x^a$, where a is a constant, is called a **power function**. There are several important cases to consider.

(a) $a = n$, a positive integer.

The graphs of $f(x) = x^n$, for $n = 1, 2, 3, 4, 5$, are displayed in Figure 1.15. These functions are defined for all real values of x . Notice that as the power n gets larger, the curves tend to flatten toward the x -axis on the interval $(-1, 1)$, and to rise more steeply for $|x| > 1$. Each curve passes through the point $(1, 1)$ and through the origin. The graphs of functions with even powers are symmetric about the y -axis; those with odd powers are symmetric about the origin. The even-powered functions are decreasing on the interval $(-\infty, 0]$ and increasing on $[0, \infty)$; the odd-powered functions are increasing over the entire real line $(-\infty, \infty)$.

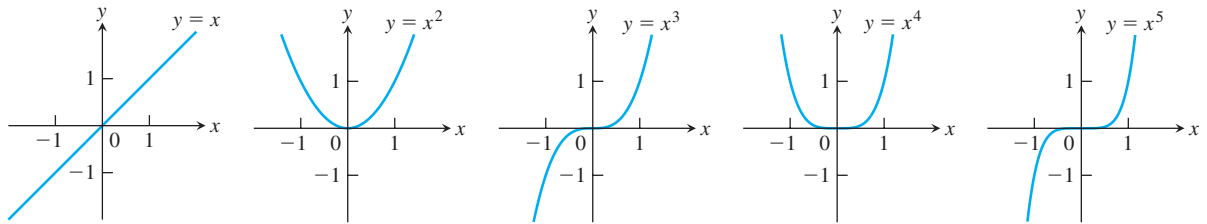


FIGURE 1.15 Graphs of $f(x) = x^n$, $n = 1, 2, 3, 4, 5$, defined for $-\infty < x < \infty$.

(b) $a = -1$ or $a = -2$.

The graphs of the functions $f(x) = x^{-1} = 1/x$ and $g(x) = x^{-2} = 1/x^2$ are shown in Figure 1.16. Both functions are defined for all $x \neq 0$ (you can never divide by zero). The graph of $y = 1/x$ is the hyperbola $xy = 1$, which approaches the coordinate axes far from the origin. The graph of $y = 1/x^2$ also approaches the coordinate axes. The graph of the function f is symmetric about the origin; f is decreasing on the intervals $(-\infty, 0)$ and $(0, \infty)$. The graph of the function g is symmetric about the y -axis; g is increasing on $(-\infty, 0)$ and decreasing on $(0, \infty)$.

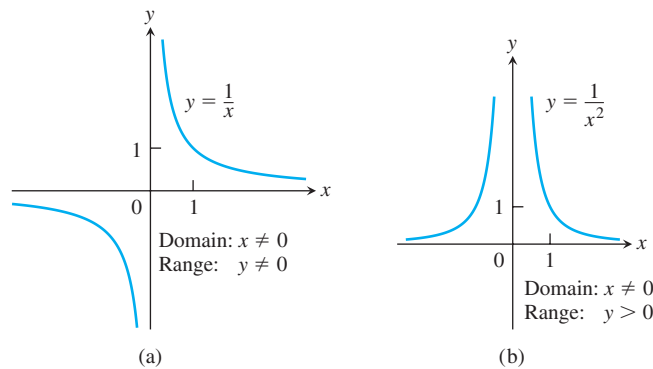


FIGURE 1.16 Graphs of the power functions $f(x) = x^a$ for part (a) $a = -1$ and for part (b) $a = -2$.

(c) $a = \frac{1}{2}$, $\frac{1}{3}$, $\frac{3}{2}$, and $\frac{2}{3}$.

The functions $f(x) = x^{1/2} = \sqrt{x}$ and $g(x) = x^{1/3} = \sqrt[3]{x}$ are the **square root** and **cube root** functions, respectively. The domain of the square root function is $[0, \infty)$, but the cube root function is defined for all real x . Their graphs are displayed in Figure 1.17, along with the graphs of $y = x^{3/2}$ and $y = x^{2/3}$. (Recall that $x^{3/2} = (x^{1/2})^3$ and $x^{2/3} = (x^{1/3})^2$.)

Polynomials A function p is a **polynomial** if

$$p(x) = a_n x^n + a_{n-1} x^{n-1} + \cdots + a_1 x + a_0$$

where n is a nonnegative integer and the numbers $a_0, a_1, a_2, \dots, a_n$ are real constants (called the **coefficients** of the polynomial). All polynomials have domain $(-\infty, \infty)$. If the

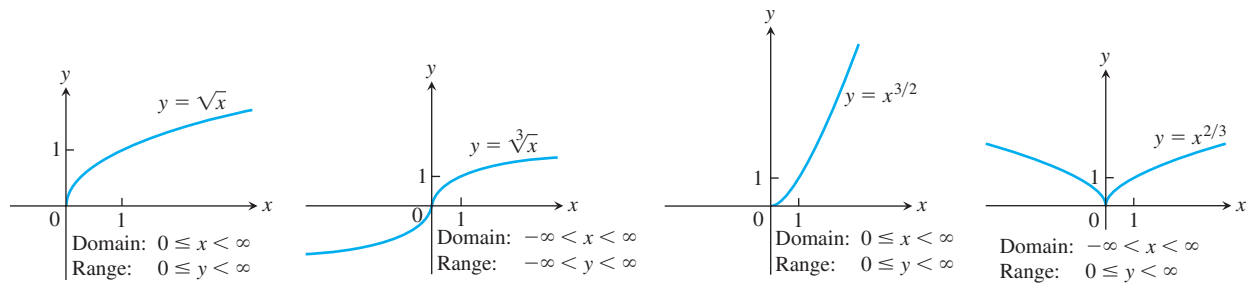


FIGURE 1.17 Graphs of the power functions $f(x) = x^a$ for $a = \frac{1}{2}, \frac{1}{3}, \frac{3}{2},$ and $\frac{2}{3}$.

leading coefficient $a_n \neq 0$ and $n > 0$, then n is called the **degree** of the polynomial. Linear functions with $m \neq 0$ are polynomials of degree 1. Polynomials of degree 2, usually written as $p(x) = ax^2 + bx + c$, are called **quadratic functions**. Likewise, **cubic functions** are polynomials $p(x) = ax^3 + bx^2 + cx + d$ of degree 3. Figure 1.18 shows the graphs of three polynomials. Techniques to graph polynomials are studied in Chapter 4.

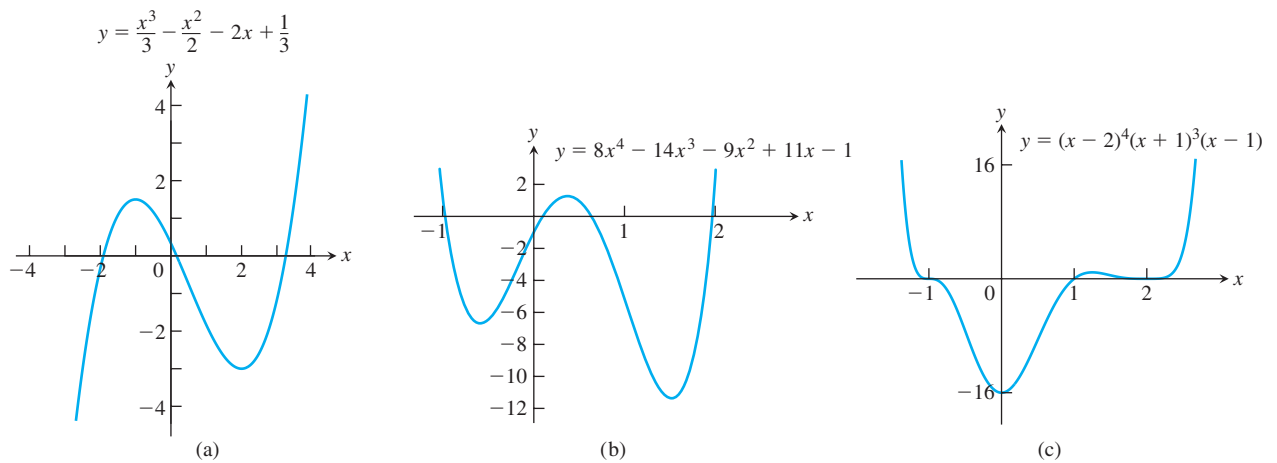


FIGURE 1.18 Graphs of three polynomial functions.

Rational Functions A **rational function** is a quotient or ratio $f(x) = p(x)/q(x)$, where p and q are polynomials. The domain of a rational function is the set of all real x for which $q(x) \neq 0$. The graphs of several rational functions are shown in Figure 1.19.

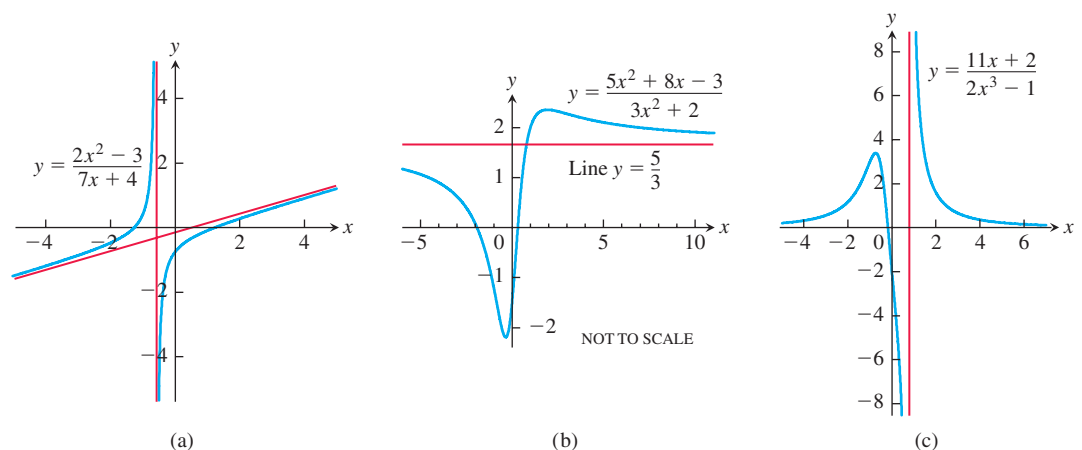


FIGURE 1.19 Graphs of three rational functions. The straight red lines approached by the graphs are called **asymptotes** and are not part of the graphs. We discuss asymptotes in Section 2.6.

Algebraic Functions Any function constructed from polynomials using algebraic operations (addition, subtraction, multiplication, division, and taking roots) lies within the class of **algebraic functions**. All rational functions are algebraic, but also included are more complicated functions (such as those satisfying an equation like $y^3 - 9xy + x^3 = 0$, studied in Section 3.7). Figure 1.20 displays the graphs of three algebraic functions.

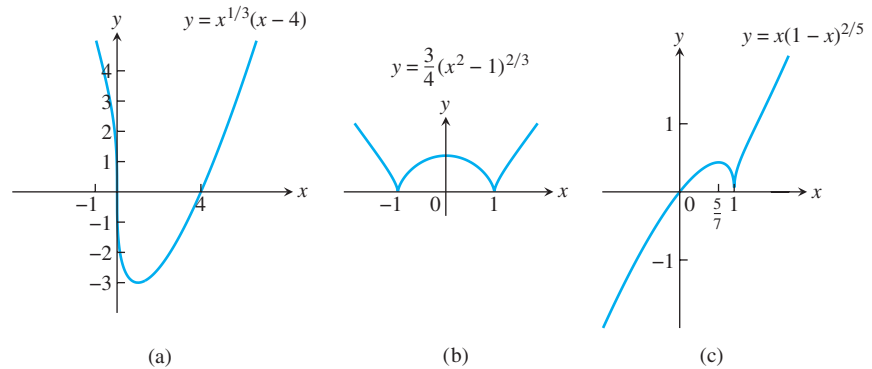


FIGURE 1.20 Graphs of three algebraic functions.

Trigonometric Functions The six basic trigonometric functions are reviewed in Section 1.3. The graphs of the sine and cosine functions are shown in Figure 1.21.

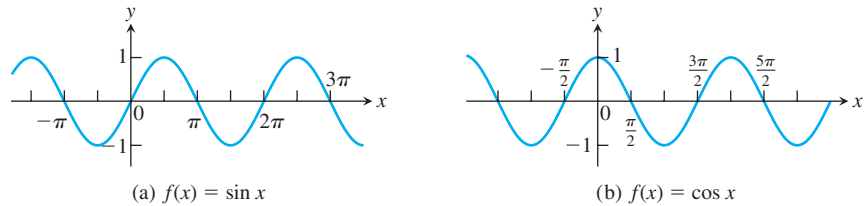


FIGURE 1.21 Graphs of the sine and cosine functions.

Exponential Functions Functions of the form $f(x) = a^x$, where the base $a > 0$ is a positive constant and $a \neq 1$, are called **exponential functions**. All exponential functions have domain $(-\infty, \infty)$ and range $(0, \infty)$, so an exponential function never assumes the value 0. We discuss exponential functions in Section 1.5. The graphs of some exponential functions are shown in Figure 1.22.

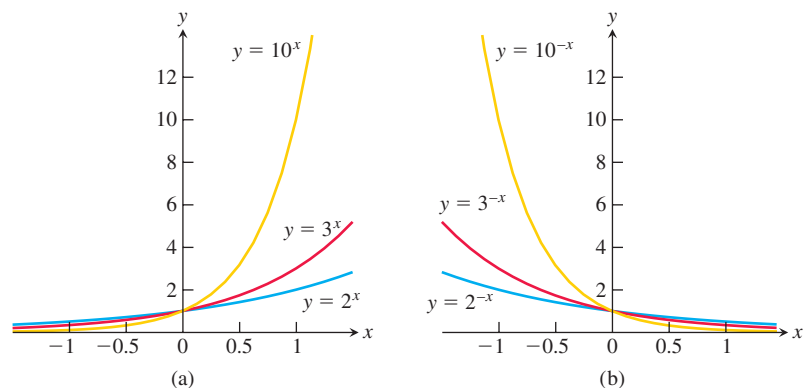


FIGURE 1.22 Graphs of exponential functions.

Logarithmic Functions These are the functions $f(x) = \log_a x$, where the base $a \neq 1$ is a positive constant. They are the *inverse functions* of the exponential functions, and we discuss these functions in Section 1.6. Figure 1.23 shows the graphs of four logarithmic functions with various bases. In each case the domain is $(0, \infty)$ and the range is $(-\infty, \infty)$.

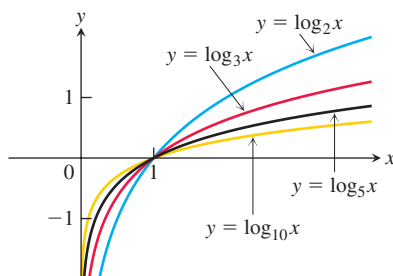


FIGURE 1.23 Graphs of four logarithmic functions.

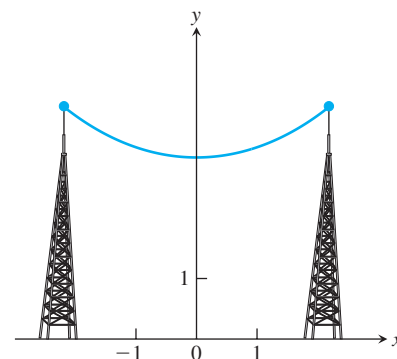


FIGURE 1.24 Graph of a catenary or hanging cable. (The Latin word *catena* means “chain.”)

Transcendental Functions These are functions that are not algebraic. They include the trigonometric, inverse trigonometric, exponential, and logarithmic functions, and many other functions as well. A particular example of a transcendental function is a **catenary**. Its graph has the shape of a cable, like a telephone line or electric cable, strung from one support to another and hanging freely under its own weight (Figure 1.24). The function defining the graph is discussed in Section 7.3.

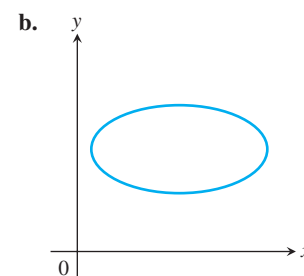
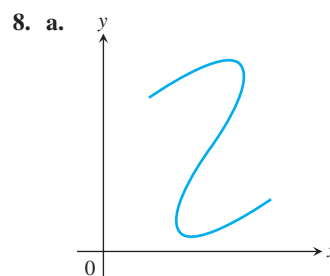
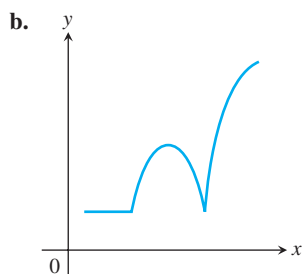
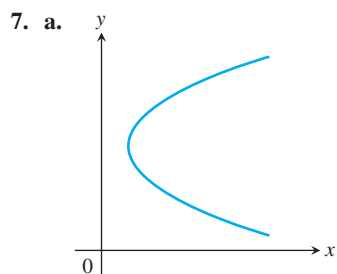
Exercises 1.1

Functions

In Exercises 1–6, find the domain and range of each function.

- $f(x) = 1 + x^2$
- $f(x) = 1 - \sqrt{x}$
- $F(x) = \sqrt{5x + 10}$
- $g(x) = \sqrt{x^2 - 3x}$
- $f(t) = \frac{4}{3 - t}$
- $G(t) = \frac{2}{t^2 - 16}$

In Exercises 7 and 8, which of the graphs are graphs of functions of x , and which are not? Give reasons for your answers.



Finding Formulas for Functions

- Express the area and perimeter of an equilateral triangle as a function of the triangle's side length x .
- Express the side length of a square as a function of the length d of the square's diagonal. Then express the area as a function of the diagonal length.
- Express the edge length of a cube as a function of the cube's diagonal length d . Then express the surface area and volume of the cube as a function of the diagonal length.

12. A point P in the first quadrant lies on the graph of the function $f(x) = \sqrt{x}$. Express the coordinates of P as functions of the slope of the line joining P to the origin.
13. Consider the point (x, y) lying on the graph of the line $2x + 4y = 5$. Let L be the distance from the point (x, y) to the origin $(0, 0)$. Write L as a function of x .
14. Consider the point (x, y) lying on the graph of $y = \sqrt{x - 3}$. Let L be the distance between the points (x, y) and $(4, 0)$. Write L as a function of y .

Functions and Graphs

Find the natural domain and graph the functions in Exercises 15–20.

15. $f(x) = 5 - 2x$ 16. $f(x) = 1 - 2x - x^2$
 17. $g(x) = \sqrt{|x|}$ 18. $g(x) = \sqrt{-x}$
 19. $F(t) = t/|t|$ 20. $G(t) = 1/|t|$
21. Find the domain of $y = \frac{x + 3}{4 - \sqrt{x^2 - 9}}$.

22. Find the range of $y = 2 + \frac{x^2}{x^2 + 4}$.
23. Graph the following equations and explain why they are not graphs of functions of x .
 a. $|y| = x$ b. $y^2 = x^2$
24. Graph the following equations and explain why they are not graphs of functions of x .
 a. $|x| + |y| = 1$ b. $|x + y| = 1$

Piecewise-Defined Functions

Graph the functions in Exercises 25–28.

25. $f(x) = \begin{cases} x, & 0 \leq x \leq 1 \\ 2 - x, & 1 < x \leq 2 \end{cases}$
 26. $g(x) = \begin{cases} 1 - x, & 0 \leq x \leq 1 \\ 2 - x, & 1 < x \leq 2 \end{cases}$
 27. $F(x) = \begin{cases} 4 - x^2, & x \leq 1 \\ x^2 + 2x, & x > 1 \end{cases}$
 28. $G(x) = \begin{cases} 1/x, & x < 0 \\ x, & 0 \leq x \end{cases}$

Find a formula for each function graphed in Exercises 29–32.

29. a. b.
30. a. b.

31. a. b.
32. a. b.

The Greatest and Least Integer Functions

33. For what values of x is
 a. $\lfloor x \rfloor = 0$? b. $\lceil x \rceil = 0$?
34. What real numbers x satisfy the equation $\lfloor x \rfloor = \lceil x \rceil$?
35. Does $\lceil -x \rceil = -\lfloor x \rfloor$ for all real x ? Give reasons for your answer.
36. Graph the function

$$f(x) = \begin{cases} \lfloor x \rfloor, & x \geq 0 \\ \lceil x \rceil, & x < 0. \end{cases}$$

Why is $f(x)$ called the *integer part of x* ?

Increasing and Decreasing Functions

Graph the functions in Exercises 37–46. What symmetries, if any, do the graphs have? Specify the intervals over which the function is increasing and the intervals where it is decreasing.

37. $y = -x^3$ 38. $y = -\frac{1}{x^2}$
 39. $y = -\frac{1}{x}$ 40. $y = \frac{1}{|x|}$
 41. $y = \sqrt{|x|}$ 42. $y = \sqrt{-x}$
 43. $y = x^3/8$ 44. $y = -4\sqrt{x}$
 45. $y = -x^{3/2}$ 46. $y = (-x)^{2/3}$

Even and Odd Functions

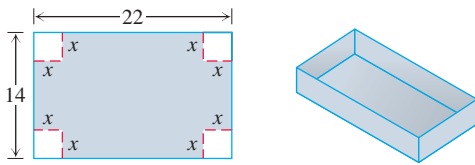
In Exercises 47–58, say whether the function is even, odd, or neither. Give reasons for your answer.

47. $f(x) = 3$ 48. $f(x) = x^{-5}$
 49. $f(x) = x^2 + 1$ 50. $f(x) = x^2 + x$
 51. $g(x) = x^3 + x$ 52. $g(x) = x^4 + 3x^2 - 1$
 53. $g(x) = \frac{1}{x^2 - 1}$ 54. $g(x) = \frac{x}{x^2 - 1}$
 55. $h(t) = \frac{1}{t - 1}$ 56. $h(t) = |t^3|$
 57. $h(t) = 2t + 1$ 58. $h(t) = 2|t| + 1$

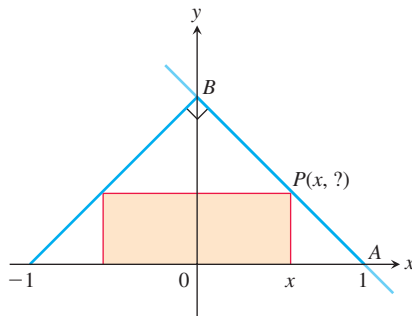
Theory and Examples

59. The variable s is proportional to t , and $s = 25$ when $t = 75$. Determine t when $s = 60$.

- 60. Kinetic energy** The kinetic energy K of a mass is proportional to the square of its velocity v . If $K = 12,960$ joules when $v = 18$ m/s, what is K when $v = 10$ m/s?
- 61.** The variables r and s are inversely proportional, and $r = 6$ when $s = 4$. Determine s when $r = 10$.
- 62. Boyle's Law** Boyle's Law says that the volume V of a gas at constant temperature increases whenever the pressure P decreases, so that V and P are inversely proportional. If $P = 14.7$ N/cm² when $V = 1000$ cm³, then what is V when $P = 23.4$ N/cm²?
- 63.** A box with an open top is to be constructed from a rectangular piece of cardboard with dimensions 14 cm by 22 cm by cutting out equal squares of side x at each corner and then folding up the sides as in the figure. Express the volume V of the box as a function of x .

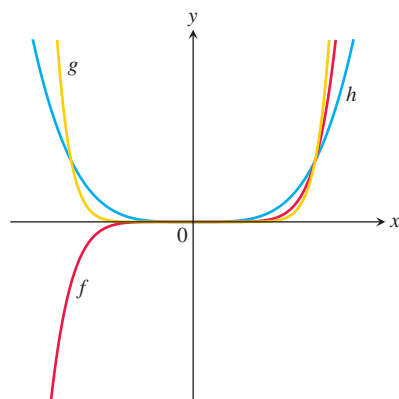


- 64.** The accompanying figure shows a rectangle inscribed in an isosceles right triangle whose hypotenuse is 2 units long.
- Express the y -coordinate of P in terms of x . (You might start by writing an equation for the line AB .)
 - Express the area of the rectangle in terms of x .

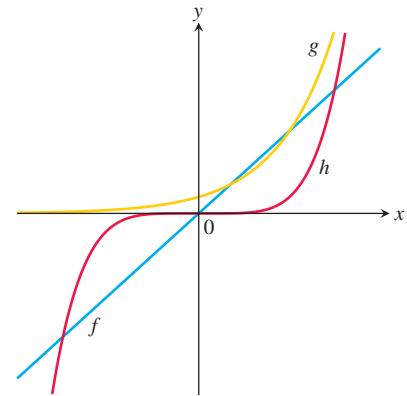


In Exercises 65 and 66, match each equation with its graph. Do not use a graphing device, and give reasons for your answer.

- 65.** a. $y = x^4$ b. $y = x^7$ c. $y = x^{10}$



- 66.** a. $y = 5x$ b. $y = 5^x$ c. $y = x^5$



- T 67.** a. Graph the functions $f(x) = x/2$ and $g(x) = 1 + (4/x)$ together to identify the values of x for which

$$\frac{x}{2} > 1 + \frac{4}{x}.$$

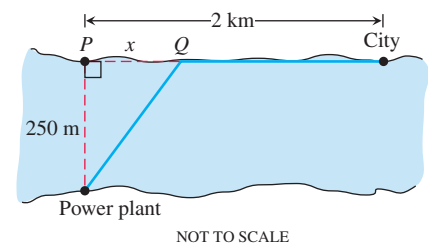
- b. Confirm your findings in part (a) algebraically.

- T 68.** a. Graph the functions $f(x) = 3/(x-1)$ and $g(x) = 2/(x+1)$ together to identify the values of x for which

$$\frac{3}{x-1} < \frac{2}{x+1}.$$

- b. Confirm your findings in part (a) algebraically.

- 69.** For a curve to be *symmetric about the x -axis*, the point (x, y) must lie on the curve if and only if the point $(x, -y)$ lies on the curve. Explain why a curve that is symmetric about the x -axis is not the graph of a function, unless the function is $y = 0$.
- 70.** Three hundred books sell for \$40 each, resulting in a revenue of $(300)(\$40) = \$12,000$. For each \$5 increase in the price, 25 fewer books are sold. Write the revenue R as a function of the number x of \$5 increases.
- 71.** A pen in the shape of an isosceles right triangle with legs of length x m and hypotenuse of length h m is to be built. If fencing costs \$5/m for the legs and \$10/m for the hypotenuse, write the total cost C of construction as a function of h .
- 72. Industrial costs** A power plant sits next to a river where the river is 250 m wide. To lay a new cable from the plant to a location in the city 2 km downstream on the opposite side costs \$180 per meter across the river and \$100 per meter along the land.



- Suppose that the cable goes from the plant to a point Q on the opposite side that is x m from the point P directly opposite the plant. Write a function $C(x)$ that gives the cost of laying the cable in terms of the distance x .
- Generate a table of values to determine if the least expensive location for point Q is less than 300 m or greater than 300 m from point P .

1.2 Combining Functions; Shifting and Scaling Graphs

In this section we look at the main ways functions are combined or transformed to form new functions.

Sums, Differences, Products, and Quotients

Like numbers, functions can be added, subtracted, multiplied, and divided (except where the denominator is zero) to produce new functions. If f and g are functions, then for every x that belongs to the domains of both f and g (that is, for $x \in D(f) \cap D(g)$), we define functions $f + g$, $f - g$, and fg by the formulas

$$(f + g)(x) = f(x) + g(x)$$

$$(f - g)(x) = f(x) - g(x)$$

$$(fg)(x) = f(x)g(x).$$

Notice that the $+$ sign on the left-hand side of the first equation represents the operation of addition of *functions*, whereas the $+$ on the right-hand side of the equation means addition of the real numbers $f(x)$ and $g(x)$.

At any point of $D(f) \cap D(g)$ at which $g(x) \neq 0$, we can also define the function f/g by the formula

$$\left(\frac{f}{g}\right)(x) = \frac{f(x)}{g(x)} \quad (\text{where } g(x) \neq 0).$$

Functions can also be multiplied by constants: If c is a real number, then the function cf is defined for all x in the domain of f by

$$(cf)(x) = cf(x).$$

EXAMPLE 1 The functions defined by the formulas

$$f(x) = \sqrt{x} \quad \text{and} \quad g(x) = \sqrt{1-x}$$

have domains $D(f) = [0, \infty)$ and $D(g) = (-\infty, 1]$. The points common to these domains are the points

$$[0, \infty) \cap (-\infty, 1] = [0, 1].$$

The following table summarizes the formulas and domains for the various algebraic combinations of the two functions. We also write $f \cdot g$ for the product function fg .

Function	Formula	Domain
$f + g$	$(f + g)(x) = \sqrt{x} + \sqrt{1-x}$	$[0, 1] = D(f) \cap D(g)$
$f - g$	$(f - g)(x) = \sqrt{x} - \sqrt{1-x}$	$[0, 1]$
$g - f$	$(g - f)(x) = \sqrt{1-x} - \sqrt{x}$	$[0, 1]$
$f \cdot g$	$(f \cdot g)(x) = f(x)g(x) = \sqrt{x(1-x)}$	$[0, 1]$
f/g	$\frac{f}{g}(x) = \frac{f(x)}{g(x)} = \sqrt{\frac{x}{1-x}}$	$[0, 1)(x = 1 \text{ excluded})$
g/f	$\frac{g}{f}(x) = \frac{g(x)}{f(x)} = \sqrt{\frac{1-x}{x}}$	$(0, 1](x = 0 \text{ excluded})$

The graph of the function $f + g$ is obtained from the graphs of f and g by adding the corresponding y -coordinates $f(x)$ and $g(x)$ at each point $x \in D(f) \cap D(g)$, as in Figure 1.25. The graphs of $f + g$ and $f \cdot g$ from Example 1 are shown in Figure 1.26.

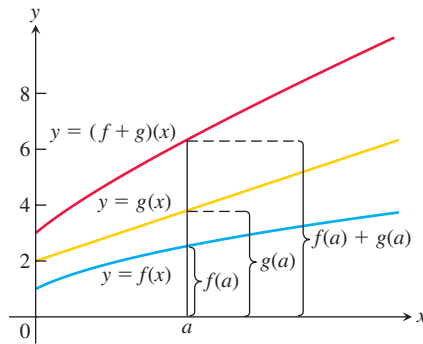


FIGURE 1.25 Graphical addition of two functions.

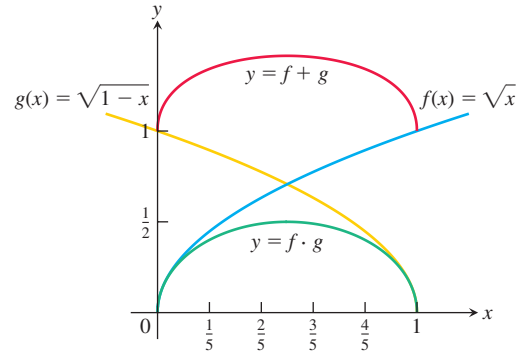


FIGURE 1.26 The domain of the function $f + g$ is the intersection of the domains of f and g , the interval $[0, 1]$ on the x -axis where these domains overlap. This interval is also the domain of the function $f \cdot g$ (Example 1).

Composite Functions

Composition is another method for combining functions.

DEFINITION If f and g are functions, the **composite** function $f \circ g$ (“ f composed with g ”) is defined by

$$(f \circ g)(x) = f(g(x)).$$

The domain of $f \circ g$ consists of the numbers x in the domain of g for which $g(x)$ lies in the domain of f .

The definition implies that $f \circ g$ can be formed when the range of g lies in the domain of f . To find $(f \circ g)(x)$, first find $g(x)$ and second find $f(g(x))$. Figure 1.27 pictures $f \circ g$ as a machine diagram, and Figure 1.28 shows the composite as an arrow diagram.

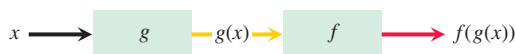


FIGURE 1.27 A composite function $f \circ g$ uses the output $g(x)$ of the first function g as the input for the second function f .

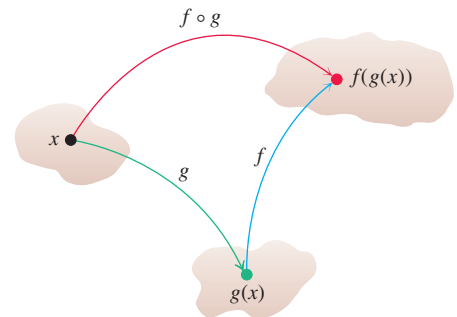


FIGURE 1.28 Arrow diagram for $f \circ g$. If x lies in the domain of g and $g(x)$ lies in the domain of f , then the functions f and g can be composed to form $(f \circ g)(x)$.

To evaluate the composite function $g \circ f$ (when defined), we find $f(x)$ first and then $g(f(x))$. The domain of $g \circ f$ is the set of numbers x in the domain of f such that $f(x)$ lies in the domain of g .

The functions $f \circ g$ and $g \circ f$ are usually quite different.

EXAMPLE 2 If $f(x) = \sqrt{x}$ and $g(x) = x + 1$, find

- (a) $(f \circ g)(x)$ (b) $(g \circ f)(x)$ (c) $(f \circ f)(x)$ (d) $(g \circ g)(x)$.

Solution

Composite	Domain
(a) $(f \circ g)(x) = f(g(x)) = \sqrt{g(x)} = \sqrt{x + 1}$	$[-1, \infty)$
(b) $(g \circ f)(x) = g(f(x)) = f(x) + 1 = \sqrt{x} + 1$	$[0, \infty)$
(c) $(f \circ f)(x) = f(f(x)) = \sqrt{f(x)} = \sqrt{\sqrt{x}} = x^{1/4}$	$[0, \infty)$
(d) $(g \circ g)(x) = g(g(x)) = g(x) + 1 = (x + 1) + 1 = x + 2$	$(-\infty, \infty)$

To see why the domain of $f \circ g$ is $[-1, \infty)$, notice that $g(x) = x + 1$ is defined for all real x but belongs to the domain of f only if $x + 1 \geq 0$, that is to say, when $x \geq -1$. ■

Notice that if $f(x) = x^2$ and $g(x) = \sqrt{x}$, then $(f \circ g)(x) = (\sqrt{x})^2 = x$. However, the domain of $f \circ g$ is $[0, \infty)$, not $(-\infty, \infty)$, since \sqrt{x} requires $x \geq 0$.

Shifting a Graph of a Function

A common way to obtain a new function from an existing one is by adding a constant to each output of the existing function, or to its input variable. The graph of the new function is the graph of the original function shifted vertically or horizontally, as follows.

Shift Formulas

Vertical Shifts

$y = f(x) + k$ Shifts the graph of f up k units if $k > 0$
 Shifts it down $|k|$ units if $k < 0$

Horizontal Shifts

$y = f(x + h)$ Shifts the graph of f left h units if $h > 0$
 Shifts it right $|h|$ units if $h < 0$

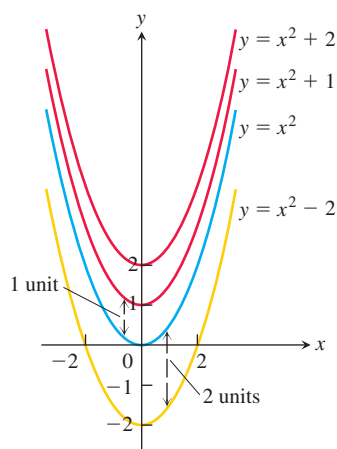


FIGURE 1.29 To shift the graph of $f(x) = x^2$ up (or down), we add positive (or negative) constants to the formula for f (Examples 3a and b).

EXAMPLE 3

- (a) Adding 1 to the right-hand side of the formula $y = x^2$ to get $y = x^2 + 1$ shifts the graph up 1 unit (Figure 1.29).
 (b) Adding -2 to the right-hand side of the formula $y = x^2$ to get $y = x^2 - 2$ shifts the graph down 2 units (Figure 1.29).
 (c) Adding 3 to x in $y = x^2$ to get $y = (x + 3)^2$ shifts the graph 3 units to the left, while adding -2 shifts the graph 2 units to the right (Figure 1.30).
 (d) Adding -2 to x in $y = |x|$, and then adding -1 to the result, gives $y = |x - 2| - 1$ and shifts the graph 2 units to the right and 1 unit down (Figure 1.31). ■

Scaling and Reflecting a Graph of a Function

To scale the graph of a function $y = f(x)$ is to stretch or compress it, vertically or horizontally. This is accomplished by multiplying the function f , or the independent variable x , by an appropriate constant c . Reflections across the coordinate axes are special cases where $c = -1$.